

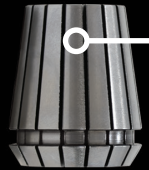
A holder for every application. What's your combo?



Retention Knobs for every machine.



Holders designed and machined to perform above and beyond those in the same class.



Collets made of heat treated special alloy steel, ground to perfection.



Balanced and ground nuts made of the strongest materials.



End mills, drills, taps and indexables of the finest quality, at an excellent price.



www.SowaTool.com

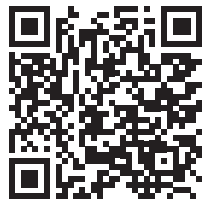




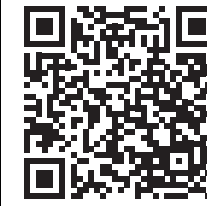
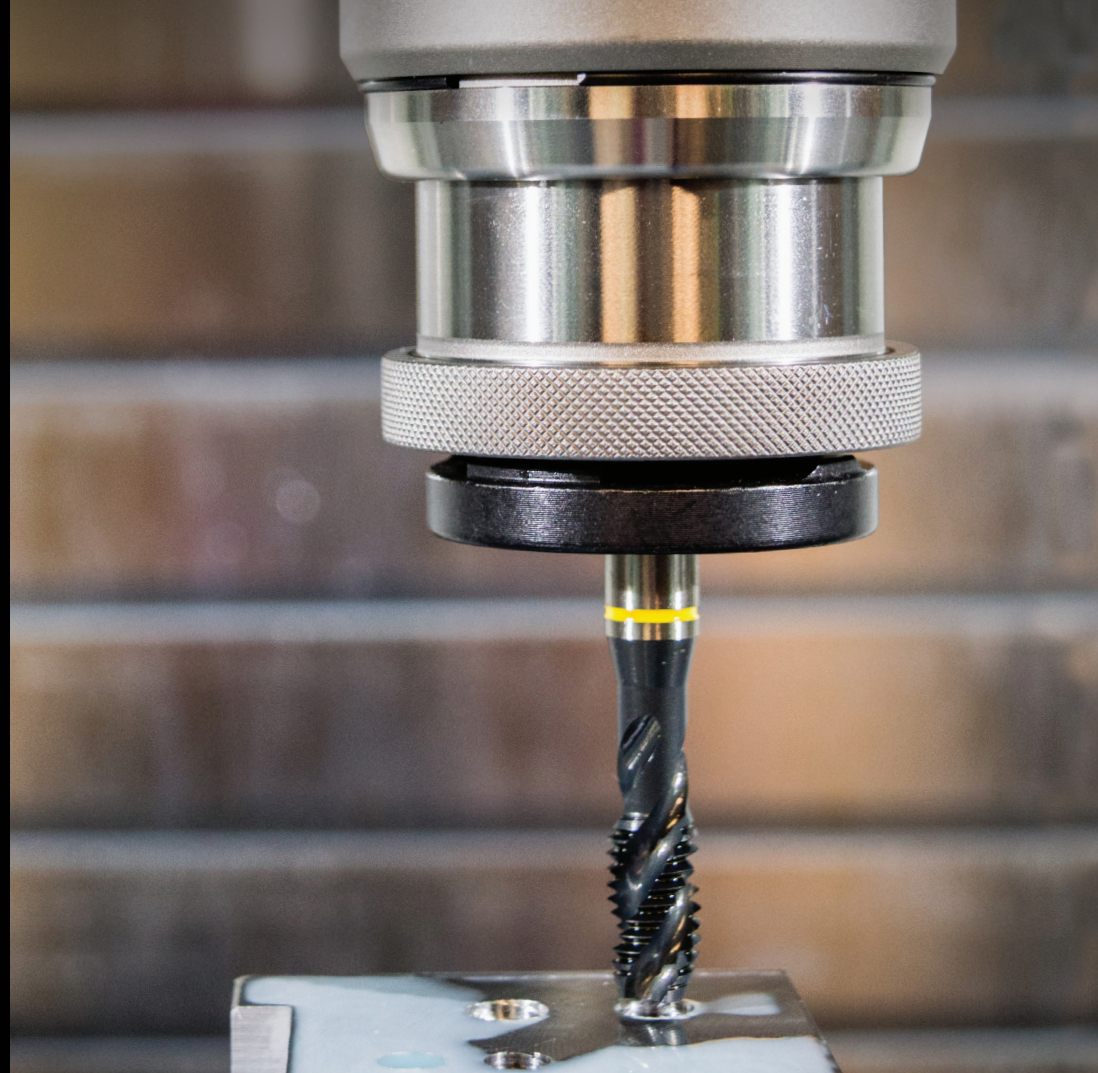
Collet Chucks & Milling Chucks



Details	ER Collet Chucks										SA Collet Chucks	TG Collet Chucks						DA Collet Chucks			Milling Chucks			
Image																								
Holder	CAT ER Collet Chuck	CAT ER Collet Chuck	Dual Contact CAT ER Collet Chuck	HSK ER Collet Chuck	ER Collet Chuck Extension	BT ER Collet Chuck	R8 Taper ER Collet Chuck	R8 Taper ER Collet Chuck	NMTB ER Collet Chuck	NMTB ER Collet Chuck	CAT SA High Precision Collet Chuck	CAT TG Collet Chuck	BT TG Collet Chuck	NMTB TG Collet Chuck	R8 TG Collet Chuck	Morse Taper TG Collet Chuck	Straight Shank TG Chuck	CAT DA Collet Chuck	BT DA Collet Chuck	DA Collet Chuck Extension	CAT Milling Chuck	Dual Contact CAT Milling Chuck	BT Milling Chuck	HSK Milling Chuck
Brand																								
Taper	CAT40, 50	CAT40, 50	CAT40,50	HSK63A, 100A	Extension	BT30, 40, 50	R8	R8	NMTB30	NMTB40, 50	CAT40, 50	CAT40, 50	BT30, 40, 50	NMTB40, 50	R8	MT	Straight	CAT40, 50	BT40, 50	Extension	CAT40, 50	CAT40, 50	BT30, 40, 50	HSK63A,100A
Taper Accuracy	AT3 or better	AT2 or better	According to Dual Contact Tolerance	According to DIN69893	h6	AT2 or better	According to R8 Tolerance	According to R8 Tolerance	AT3 or better	AT2 or better	AT2 or better	AT2 or better	AT2 or better	AT2 or better	According to R8 Tolerance	According to Morse Taper Tolerance	h6	AT2 or better	AT2 or better	h6	AT3 or better	According to Dual Contact Tolerance	AT3 or better	According to DIN69893
Coolant Features	AD/B DIN Standard	AD/B DIN Standard	AD/B DIN Standard	Coolant Through	Coolant Through	AD/B JIS Standard	Coolant Through	Coolant Through	Coolant Through	Coolant Through	AD/B DIN Standard	AD/B DIN Standard	AD/B JIS Standard	Coolant Through	Coolant Through	Not Coolant Through	Coolant Through	AD/B DIN Standard	AD/B JIS Standard	Coolant Through	AD/B DIN Standard	AD/B DIN Standard	AD/B JIS Standard	Coolant Through
Material Grade	42CrMo	16NiCr4 Premium European Alloy Steel	16NiCr4 Premium European Alloy Steel	16NiCr4 Premium European Alloy Steel	16NiCr4 Premium European Alloy Steel	16NiCr4 Premium European Alloy Steel	SCM415 Steel	16NiCr4 Premium European Alloy Steel	SCM415 Steel	16NiCr4 Premium European Alloy Steel	16NiCr4 Premium European Alloy Steel	16NiCr4 Premium European Alloy Steel	16NiCr4 Premium European Alloy Steel	16NiCr4 Premium European Alloy Steel	16NiCr4 Premium European Alloy Steel	16NiCr4 Premium European Alloy Steel	16NiCr4 Premium European Alloy Steel	16NiCr4 Premium European Alloy Steel	16NiCr4 Premium European Alloy Steel	16NiCr4 Premium European Alloy Steel	SNCM 420	SNCM 420	SNCM 420	SNCM 420
Factory Balanced (Certificate Included)	CAT40: G2.5/20,000rpm CAT50: G2.5/15,000rpm	CAT40: G2.5/30,000rpm CAT50: G2.5/25,000rpm	CAT40: G2.5/30,000rpm CAT50: G2.5/25,000rpm	HSK63A: G2.5/30,000rpm HSK100A: G2.5/25,000rpm	Factory Balanced	BT30 & BT40: 2.5/30,000rpm BT50: G2.5/25,000rpm	Factory Balanced	Factory Balanced	Factory Balanced	Factory Balanced	CAT40: 20,000rpm CAT50: 15,000rpm	CAT40: 20,000rpm CAT50: 15,000rpm	BT30 & BT40: 20,000rpm BT50: 15,000rpm	Factory Balanced	Factory Balanced	Factory Balanced	Factory Balanced	CAT40: G6.3/30,000rpm CAT50: G6.3/25,000rpm	BT30 & BT40: G6.3/30,000rpm	Factory Balanced	G6.3/10,000rpm	G6.3/10,000rpm	G6.3/10,000rpm	G6.3/10,000rpm
Runout Accuracy	0.0002"	0.0001"	0.0001"	0.0001"	0.0001"	0.0001"	0.0002"	0.0001"	0.0002"	0.0001"	0.0001"	0.0002"	0.0002"	0.0001"	0.0001"	0.0001"	0.0001"	0.0001"	0.0001"	0.0001"	0.00039" @ 3.937"	0.00039" @ 3.937"	0.00039" @ 3.937"	0.00039" @ 3.937"
Thread Tolerance	6h	4h	4h	4h	4h	4h	6h	4h	6h	4h	4h	4h	4h	4h	4h	4h	4h	4h	4h	4h	-	-	-	-
RFID Chip Hole	Yes	Yes	Yes	Yes	No	Yes	No	No	No	No	Yes	Yes	Yes	No	No	No	No	Yes	Yes	No	Yes	Yes	Yes	Yes



Tapping Chucks



Drill Chucks

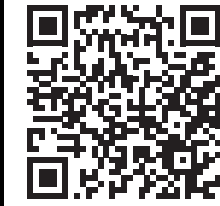
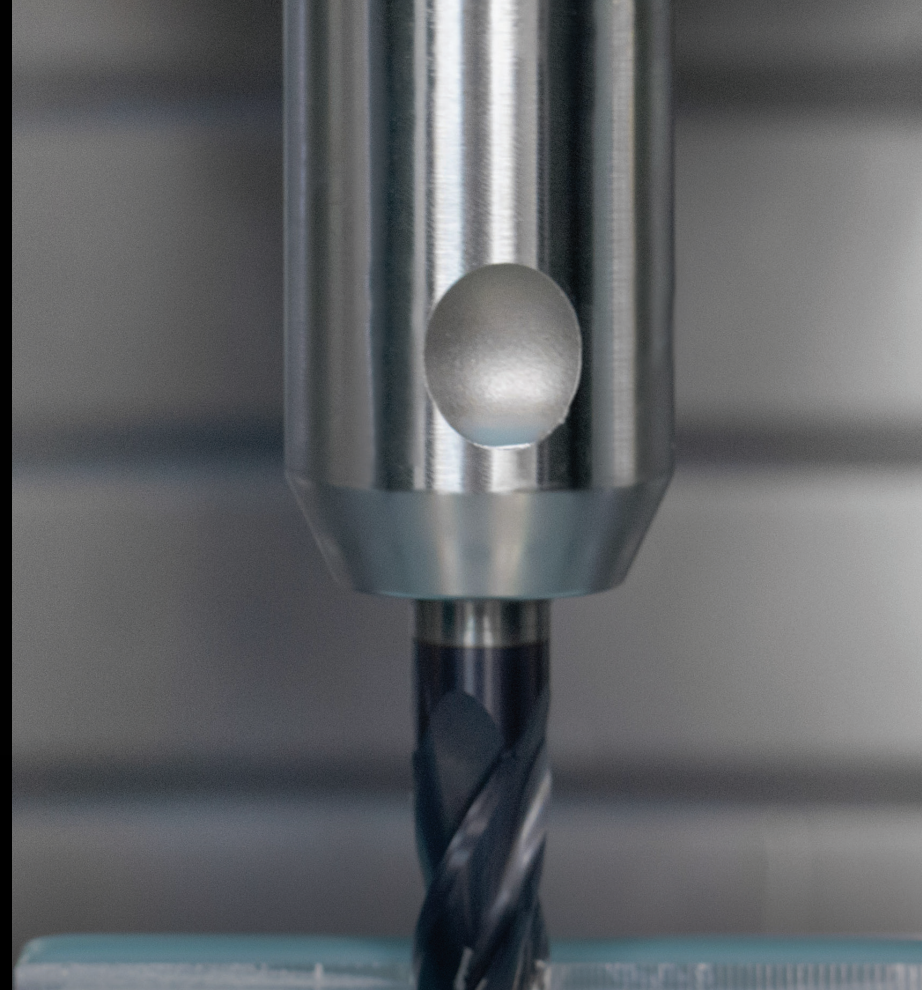


Details	Tapping Chucks												
Image													
Holder	CAT Tension/Compression Tap Holder	CAT Rigid Tap Holder	BT Tension/Compression Tap Holder	BT Rigid Tap Holder	HSK Tension/Compression Tap Holder	HSK Rigid Tap Holder	NMTB Tension/Compression Tap Holder	Weldon Shank Tension/Compression Tap Holder	Weldon Shank Rigid Tap Holder	Straight Shank Tension/Compression Tap Holder	Straight Shank Tension/Compression Tap Holder	Straight Shank Rigid Tap Holder	Morse Taper Tension/Compression Tap Holder
Brand													
Taper	CAT40, 50	CAT40, 50	BT30, 40, 50	BT30, 40, 50	HSK63, 100	HSK63, 100	NMTB40	Weldon	Weldon	Straight	Straight	Straight	MT3, 4
Taper Accuracy	AT2 or better	AT2 or better	AT2 or better	AT2 or better	AT2 or better	AT2 or better	AT2 or better	h6	h6	h6	h6	h6	According to Morse Taper Tolerance
Coolant Features	Not Coolant Through	Not Coolant Through	Not Coolant Through	Not Coolant Through	Not Coolant Through	Not Coolant Through	Not Coolant Through	Not Coolant Through	Not Coolant Through	Not Coolant Through	Not Coolant Through	Not Coolant Through	Not Coolant Through
Material Grade	16NiCr4 Premium European Alloy Steel	16NiCr4 Premium European Alloy Steel	16NiCr4 Premium European Alloy Steel	16NiCr4 Premium European Alloy Steel	16NiCr4 Premium European Alloy Steel	16NiCr4 Premium European Alloy Steel	16NiCr4 Premium European Alloy Steel	16NiCr4 Premium European Alloy Steel	16NiCr4 Premium European Alloy Steel	16NiCr4 Premium European Alloy Steel	16NiCr4 Premium European Alloy Steel	16NiCr4 Premium European Alloy Steel	16NiCr4 Premium European Alloy Steel
Factory Balanced (Certificate Included)	Factory Balanced	Factory Balanced	Factory Balanced	Factory Balanced	Factory Balanced	Factory Balanced	Factory Balanced	Factory Balanced	Factory Balanced	Factory Balanced	Factory Balanced	Factory Balanced	Factory Balanced
RFID Chip Hole	Yes	Yes	Yes	Yes	Yes	Yes	No	No	No	No	No	No	No

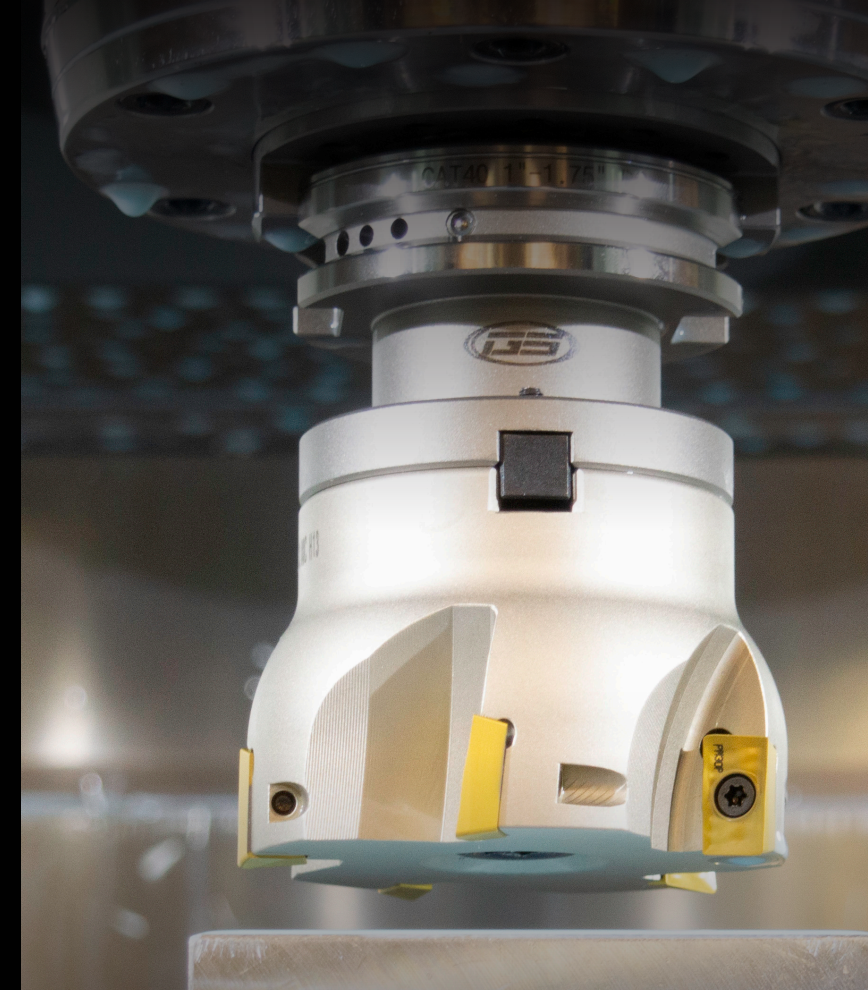
Details	Drill Chucks									
Image										
Holder	CAT Integral Keyless Drill Chuck	BT Integral Keyless Drill Chuck	NMTB Integral Keyless Drill Chuck	Morse Taper Integral Keyless Drill Chuck	R8 Integral Keyless Drill Chuck	Straight Shank Integral Keyless Drill Chuck	Replacement Drill Chuck	Super Heavy Duty Ball Bearing Drill Chuck	Plain Bearing Drill Chuck	Super Precision Keyless Drill Chuck
Brand										
Taper	CAT40, 50	BT30, 40, 50	NMTB40, 50	MT4	R8	Straight	N/A	N/A	N/A	N/A
Taper Accuracy	AT2 or better	AT2 or better	AT3 or better	According to R8 Tolerance	According to R8 Tolerance	h6	N/A	N/A	N/A	N/A
Material Grade	SCM415H	SCM415H	SCM415H	SCM415H	SCM415H	SCM415H	SCM415H	Y45S20	Y45S20	SCM415H
Balance Rating	No pre-balance rating	No pre-balance rating	No pre-balance rating	No pre-balance rating	No pre-balance rating	No pre-balance rating	No pre-balance rating	No pre-balance rating	No pre-balance rating	No pre-balance rating
Runout Accuracy	0.0027" / 0.07mm	0.0027" / 0.07mm	0.0027" / 0.07mm	0.002" / 0.05mm	0.002" / 0.05mm	0.002" / 0.05mm	0.002" / 0.05mm	0.18mm	0.18mm	0.002" / 0.05mm
RFID Chip Hole	Yes	Yes	No	No	No	No	N/A	N/A	N/A	N/A



End Mill Holders



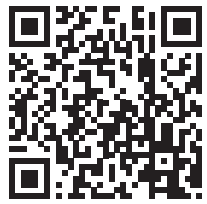
Face Mill, Shell Mill & Boring Head Holders



Details	End Mill Holders										
Image											
Holder	CAT End Mill Holder	CAT End Mill Holder	Dual Contact CAT End Mill Holder	Direct Coolant CAT End Mill Holder	BT End Mill Holder	Direct Coolant BT End Mill Holder	HSK End Mill Holder	NMTB End Mill Holder	R8 End Mill Holder	Straight Shank End Mill Holder	Blank Bars
Brand											
Taper	CAT40, 50	CAT40, 50	CAT40, 50	CAT40, 50	BT30, 40, 50	BT30, 40, 50	HSK63A,100A	NMTB40, 50	R8	Extension	CAT40, 50, NMTB
Taper Accuracy	AT3 or better	AT2 or better	AT2 or better	AT2 or better	AT2 or better	AT2 or better	According to DIN69893	AT2 or better	According to R8 Tolerance	h6	AT2 or better
Coolant Features	AD/B DIN Standard	AD/B DIN Standard	AD/B DIN Standard	AD/B DIN Standard, Coolant Through Body	AD/B JIS Standard	AD/B DIN Standard, Coolant Through Body	Coolant Through	Coolant Through	Coolant Through	Coolant Through	Not Coolant Through
Material Grade	42CrMo	16NiCr4 Premium European Alloy Steel	16NiCr4 Premium European Alloy Steel	16NiCr4 Premium European Alloy Steel	16NiCr4 Premium European Alloy Steel	16NiCr4 Premium European Alloy Steel	16NiCr4 Premium European Alloy Steel	16NiCr4 Premium European Alloy Steel	16NiCr4 Premium European Alloy Steel	16NiCr4 Premium European Alloy Steel	SNCM 420H
Factory Balanced (Certificate Included)	CAT40: G2.5/ 8,000rpm CAT50: G2.5/ 6,000rpm	CAT40: G6.3/ 30,000rpm CAT50: G6.3/ 25,000rpm	CAT40: G6.3/ 30,000rpm CAT50: G6.3/ 25,000rpm	CAT40: G6.3/ 30,000rpm CAT50: G6.3/ 25,000rpm	BT30 & BT40: 6.3/ 30,000rpm BT50: G6.3/ 25,000rpm	BT30 & BT40: 6.3/ 30,000rpm BT50: G6.3/ 25,000rpm	HSK63A: G6.3/ 30,000rpm HSK100A: G6.3/ 25,000rpm	Factory Balanced	Factory Balanced	Factory Balanced	Factory Balanced
Runout Accuracy	0.0002"	0.0001"	0.0001"	0.0001"	0.0001"	0.0001"	0.0001"	0.0001"	0.0001"	0.0001"	0.0001"
RFID Chip Hole	Yes	Yes	Yes	Yes	Yes	Yes	Yes	No	No	No	No

Details	Face Mill & Shell Mill Holders						
Image							
Holder	CAT Shell Mill Holder	Dual Contact CAT Shell Mill Holder	BT Shell Mill Holder	HSK Shell Mill Holder	NMTB Face Mill Holder	R8 Shell Mill Holder	ISA/MT Face Mill Holder
Brand							
Taper	CAT40, 50	CAT40, 50	BT30, 40, 50	HSK63A,100A	NMTB40, 50	R8	ISA/MT
Taper Accuracy	AT2 or better	AT2 or better	AT2 or better	According to DIN69893	AT2 or better	According to R8 Tolerance	AT3 or better
Coolant Features	AD/B DIN Standard	AD/B DIN Standard	AD/B JIS Standard	Coolant Through	Not Coolant Through	Coolant Through	Not Coolant Through
Material Grade	16NiCr4 Premium European Alloy Steel	16NiCr4 Premium European Alloy Steel	16NiCr4 Premium European Alloy Steel	16NiCr4 Premium European Alloy Steel	16NiCr4 Premium European Alloy Steel	16NiCr4 Premium European Alloy Steel	Alloy Forged Steel
Factory Balanced (Certificate Included)	CAT40: G6.3/ 30,000rpm CAT50: G6.3/ 25,000rpm	CAT40: G6.3/ 30,000rpm CAT50: G6.3/ 25,000rpm	BT30 & BT40: 6.3/ 30,000rpm BT50: G6.3/ 25,000rpm	HSK63: G6.3/ 30,000rpm HSK100: G6.3/ 25,000rpm	Factory Balanced	Factory Balanced	Factory Balanced
Runout Accuracy	0.0001"	0.0001"	0.0001"	0.0001"	0.0001"	0.0001"	0.0004"
RFID Chip Hole	Yes	Yes	Yes	Yes	No	No	No

Details	Boring Head Holders		
Image			
Holder	CAT Boring Head Holder	BT Boring Head Holder	NMTB Boring Head Holder
Brand			
Taper	CAT40, 50	BT30	NMTB40, 50
Taper Accuracy	AT2 or better	AT2 or better	AT2 or better
Coolant Features	Not Coolant Through	Not Coolant Through	Not Coolant Through
Material Grade	16NiCr4 Premium European Alloy Steel	16NiCr4 Premium European Alloy Steel	16NiCr4 Premium European Alloy Steel
Factory Balanced (Certificate Included)	Factory Balanced	Factory Balanced	Factory Balanced
Runout Accuracy	0.0001"	0.0001"	0.0001"
Thread Tolerance	4h	4h	4h
RFID Chip Hole	Yes	Yes	No



Shrink Fit Holders & ShrinkSMART

Details	Shrink Fit Holders		
Image			
Holder	CAT Shrink Fit Holder	BT Shrink Fit Holder	HSK Shrink Fit Holder
Brand			
Taper	CAT40, 50	BT30, 40	HSK63A, 100A
Taper Accuracy	AT2 or better	AT2 or better	AT2 or better
Coolant Features	4 Coolant Ports in Nose	4 Coolant Ports in Nose	4 Coolant Ports in Nose
Material Grade	H13 Tool Steel	H13 Tool Steel	H13 Tool Steel
Factory Balanced (Certificate Included)	CAT40&50: G2.5/30,000rpm	BT30&40: G2.5/30,000rpm	HSK63A&100A: G2.5/30,000rpm
Runout Accuracy	0.0001"	0.0001"	0.0001"
RFID Chip Hole	Yes	Yes	Yes



Superior performance tooling solutions when speed and accuracy matter most.

GS Tooling is an industry leader in precision tooling where high-performance and stringent quality standards are essential. Tool Your World with GS Tooling End Mill Holders, Collet Chucks & Collets, Retention Knobs, Vises & Workholding, Live Centers, Angle Heads, Carbide End Mills and more!



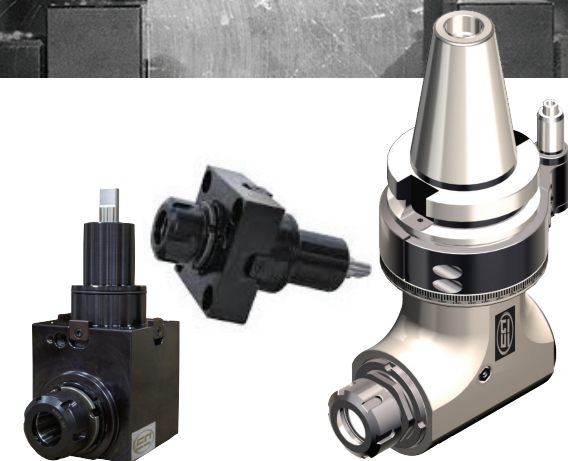
Shop GS Tooling



Tool Holding



Cutting Tools



Angle Heads & Driven Tooling



Vises & Workholding

The Sowa logo is rendered in a bold, italicized, yellow sans-serif font with a black outline.

TOOLING
YOUR
WORLD.

We've
Got You
Covered.

- Tool Holding
- Retention Knobs
- Collets
- Cutting Tools
- Indexable Cutting Tools
- Workholding
- Measuring & Inspecting
- Accessories

A yellow circular graphic with black tick marks around its perimeter. The text "From Spindle to Table" is written in black, following the curve of the circle. Two white arrowheads point towards the center of the circle from the top and bottom.A yellow circular graphic with black tick marks around its perimeter. The text "From Headstock to Tailstock" is written in black, following the curve of the circle. Two white arrowheads point towards the center of the circle from the left and right.The logo for the 50th anniversary of United Tool Supply Ltd. It features a large "50" with a red arrow pointing upwards through the zero, followed by the text "TH ANNIVERSARY 1974-2024" and "UNITED TOOL SUPPLY LTD." in a bold, black, sans-serif font.

www.SowaTool.com