

TOOL-A-THON

25.2

Valid Sept. 1st, 2025 – Feb. 28th, 2026



50TH ANNIVERSARY 1974-2024
UNITED
TOOL SUPPLY LTD.



ECLIPSE
TOOLS NORTH AMERICA INC.

Moore & Wright Magnetic Base and Indicator Set - Digital

Features:

- Includes MW475-01 magnetic base with fine adjustment and MW405-04DB 0-12.5mm/0.01mm digital indicator



Part No. MW475-SET2

Sale \$181.⁹²

List Price \$202.13



Moore & Wright Digital Height Pre-Setter

Features:

- Inductive measurement system
- 2.5mm travel
- IP65
- 2 button design (On/Off + Set / mm/inch)
- LCD lights up when display shows 0.000
- Auto-on when measuring surface is moved



Part No. MW620-03DIP

Sale \$194.⁷⁹

List Price \$216.44



Moore & Wright Vee Blocks, Standard Pairs

Features:

- Supplied in matched and numbered pairs
- Manufactured from close grained cast iron
- Ground faces



Part No.	Capacity	Width	Length	Height	Accuracy	List Price	Sale Price
211	2.48"	3.3"	1.55"	2.52"	0.0015"	\$141.26	\$127.13
212	3.15"	4.1"	1.75"	2.91"	0.0015"	\$177.05	\$159.35
213	3.94"	5.3"	1.95"	3.70"	0.0020"	\$286.14	\$257.53
214	4.92"	6.1"	2.15"	4.09"	0.0020"	\$312.96	\$281.66
215	6.30"	7.2"	2.54"	5.27"	0.0025"	\$527.57	\$474.81
216	7.87"	8.8"	2.94"	6.45"	0.0025"	\$795.82	\$716.24

Moore & Wright Traditional Vee Blocks & Clamps

Features:

- General workshop grade
- Manufactured from close grained cast iron
- Supplied in matched and numbered pairs
- One steel clamp and screw supplied per pair
- Accuracy: 0.020"
- Range: 1½"
- Width: 1½"
- Length: 2"
- Height: 1½"



Part No. 230

Sale \$141.⁰⁴

List Price \$156.71

Moore & Wright Traditional Vee Blocks & Clamps

Features:

- Precision Vee Blocks
- Manufactured to BS3731 grade B
- Manufactured from case hardened and ground mild steel
- Supplied in matched pairs only
- Two malleable iron clamps with steel screws supplied with each pair of blocks
- Accuracy: 0.004"
- Range: 1"
- Width: 1¼"
- Length: 1½"
- Height: 1¼"



Part No. 231

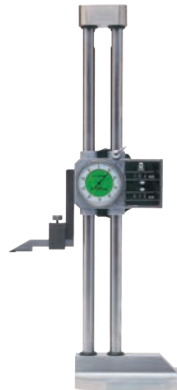
Sale \$224.²⁶

List Price \$249.18

Moore & Wright Double Column Height Gauge

Features:

- Provided with a hand feed wheel for easy up and down feeding
- The mechanical digital counters can be set to zero at any position
- The double column combines high stability with absolute accuracy
- With carbide tipped scribe
- The counter reads steps of 1mm



Part No.	Range	Resolution	List Price	Sale Price
MW195-30	0-12"	0.0004"	\$650.94	\$585.85
MW195-50	0-24"	0.0004"	\$1,202.60	\$1,082.34

Prices & Specifications are subject to change without notice.

Moore & Wright Digital Depth Micrometer

Features:

- Digital functions: mm/inch conversion, set, on/off, zero-setting, battery low indication, hold, 0...ABS
- Interchangeable rods (spherical ends)
- Rods are hardened and spherically lapped
- Satin chrome finished base
- Constant force ratchet on thimble



Part No.	Range	Resolution	List Price	Sale Price
MW305-00DDL	0-1"	0.00005"	\$587.83	\$529.05
MW305-03DDL	0-6"	0.00005"	\$678.31	\$610.48
MW305-05DDL	0-12"	0.00005"	\$987.68	\$888.91

Moore & Wright Digital Tube Micrometer

Features:

- With constant force ratchet thimble
- Chrome plated frame
- Functions: mm/inch conversion, on/off, zero-setting, battery low indication, hold, 0...ABS
- Packed in plastic box, supplied with battery cover key
- Range: 0-1"
- Resolution: 0.00005"



Part No. MW255-01DDL

Sale \$529.⁰⁵

List Price \$587.83

Moore & Wright Workshop Combination Set

Features:

- For various measuring and marking applications
- Hardened and ground slide ways
- Stainless steel rule with engraved graduations; one side metric, one side imperial
- 4 items in set
- Range: 180°



Part No. MW521-01

Sale \$159.³⁵

List Price \$177.05

Moore & Wright Precision Engineers' Bevelled Edge Square

Features:

- Precision ground and micro-lapped
- 2 knife-form sides with angle of 40°
- 40 x 30mm



Part No. MW910-01

Sale \$59.49

List Price \$66.10

Moore & Wright Traditional Engineers' Rules

Features:

- D shaped end with hanging hole
- Satin chrome anti-glare finish
- Permanent black high definition scale markings



Part No.	Description	List Price	Sale Price
ER106F	6" Engineers' Rigid Rule	\$7.85	\$7.07
ER112	12" Engineers' Rigid Rule	\$17.53	\$15.78

Moore & Wright Workshop External Micrometer Set

Features:

- Standard: DIN 863
- Tungsten carbide measuring faces
- Satin-chrome scale
- Satin-chrome forged steel frame with insulated grip
- Constant force ratchet on thimble
- Adjusting key
- Supplied with setting standards
- Supplied in wooden box
- Range: 0-3"
- Resolution: 0.0001"
- 3 micrometers in set



Part No. MW215-01BLI

Sale \$221.71

List Price \$233.38

Moore & Wright Digital Caliper

Features:

- Functions: mm/inch conversion, on/off, zero-setting, ABS/INC, Auto off
- 4-way measurement
- All metal parts made of hardened steel



Part No.	Range	Resolution	Jaws	List Price	Sale Price
MW110-15DBL	0-6"	0.0005"	40mm	\$107.07	\$96.36
MW110-20DBL	0-8"	0.0005"	50mm	\$150.33	\$135.30
MW110-30DBL	0-12"	0.0005"	60mm	\$243.34	\$219.01

Moore & Wright Digital Inside Groove Caliper

Features:

- Glass scale
- IP54 rated
- CR2032 battery powered
- Range: 0.43-8"
- Resolution: 0.0005"
- Accuracy: 0.0015"



Part No. MW125-20DABS

Sale \$252.⁰⁵

List Price \$280.06

Moore & Wright Dial Calipers

Features:

- Standard: DIN 862
- High-quality shockproof dial caliper
- Hardened stainless steel rack

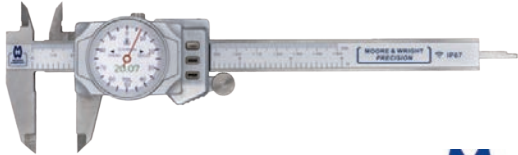


Part No.	Range	Resolution	List Price	Sale Price
MW143-15I	0-6"/0-150mm	0.001"/0.03mm	\$87.60	\$31.39
MW143-20I	0-8"/0-200mm	0.001"/0.03mm	\$107.07	\$38.43

Moore & Wright Digital Dial Caliper

Features:

- Large backlit colour LCD display within a metal housing
- Measurement can be displayed as a dial, as digits, or both combine
- Configuration menu including multiple brightness and time off settings
- Built in wireless data transfer for data export direct to a Windows application (Excel, Word, Notepad)
- Tolerance settings with Go / No Go indication via green / red numeric display
- IP67 ingress protection
- Supplied in a protective case
- Range: 0-6"
- Resolution: 0.0005"
- Accuracy: 0.001"
- Jaws: 40mm length



Part No. MW148-15D

Sale \$268.⁷²

List Price \$298.58



Moore & Wright Carbon Fibre Caliper

Features:

- Reinforced carbon fibre for reduced weight and ease of use
- Extended length caliper options for the measurement of large objects up to 1.5 meters
- Large backlit colour LCD display
- Selectable as metric or imperial display, both scales etched on beam
- IP65 ingress protection



Part No.	Range	Resolution	Jaws	List Price	Sale Price
MW153-60DDL	0-24"	0.0005"	138mm	\$1,056.00	\$950.40
MW153-75DDL	0-40"	0.0005"	138mm	\$1,430.41	\$1,287.37
MW153-80DDL	0-60"	0.0005"	150mm	\$2,152.05	\$1,936.85

Moore & Wright Digital Height Gauge

Features:

- Easy to read LCD display
- Fine adjustment for high precision measurement
- Supplied with carbide tipped scribe



Part No.	Range	Resolution	List Price	Sale Price
MW193-30DDL	0-12"/0-300mm	0.0005"/0.01mm	\$989.73	\$890.76
MW193-60DDL	0-24"/0-600mm	0.0005"/0.01mm	\$1,368.31	\$1,231.48

Moore & Wright Surface Roughness Tester

Features:

- Bright LCD display for wide angle viewing
- Digital signal processing for high accuracy measurement
- Selectable measuring parameters, sample distance and units
- Internal storage of 500 data points
- Data export to PC, analysis and reporting by dedicated software
- Aluminum housing for high durability and protection from electromagnetic interference



Part No. MWT-1100

Sale \$1,782.⁰⁰

List Price \$1,980.00



Moore & Wright Leeb Hardness Tester

Features:

- Can be used on steel and cast steel, alloy tool steel, grey cast iron, ductile iron, cast aluminum alloy, copper zinc alloy (brass), copper tin alloy (bronze), pure copper
- Equivalent values from 6 additional hardness standards displayed simultaneously on screen
- Colour screen LCD with adjustable brightness
- Leeb hardness shock wave display for additional diagnostics
- Compact & portable
- Suitable for harsh operating environments



Part No. MWT-3100

Sale \$1,444.²³

List Price \$1,604.70



Moore & Wright Videoscope With 1 Meter Probe

Features:

- Large 4.5 inch display
- High resolution 1280 x 720p
- 1 Megapixel camera
- Lightweight for ease of use
- Joystick to guide the probe with 360° movement
- 100° Wide field of view, large depth of field (8mm to 150mm)
- USB type C and HDMI screen output
- Probe waterproof to IP68
- Images saved as Jpeg 1280 x 720p
- Video saved as MP4 1280 x 720p
- 32 Gb storage capacity and SD card compatible
- Internal rechargeable battery, with charger
- Supplied in a rigid protective carry case



Part No. MWT-7500

Sale \$2,525.⁶⁸

List Price \$2,806.31



Moore & Wright Digital Dial Snap Micrometer

Features:

- Range: 0-1"/0-25mm
- Resolution: 0.000008"/0.0002mm
- Zero at any point
- High precision optical linear encoder
- Configurable as analogue dial or digital display
- Configurable tolerances, colour indication of under, in, or over tolerance
- Tungsten carbide anvils
- Chrome finished thimble with vernier scale
- Auto power off
- Wireless data output
- IP54 rating



NEW!



Part No. MW202-01DSBT

Sale \$530.⁹²

List Price \$589.92

Moore & Wright ELS Engineers Level

Features:

- Main vial sensitivity of 1 minute
- Each level is fitted with a main, cross and plumb vial
- Main vial protected by rotating shroud
- Vial solution maintains colour and fluidity under all workshop conditions
- Precision ground cast base with vee groove for location on cylindrical work



Part No.	Resolution	Base Length	List Price	Sale Price
ELS	0.01"/0.3mm	165mm x 34mm x 46mm	\$362.13	\$325.92

Moore & Wright ELM Engineers Level

Features:

- Main vial sensitivity of 1 minute
- Each level is fitted with a main, cross and plumb vial
- Main vial protected by rotating shroud
- Vial solution maintains colour and fluidity under all workshop conditions
- Precision ground cast base with vee groove for location on cylindrical work



Part No.	Resolution	Base Length	List Price	Sale Price
ELM	0.01"/0.3mm	310mm x 36mm x 58mm	\$434.76	\$391.28

Prices & Specifications are subject to change without notice.

CV Instruments Rockwell Type Hardness Tester

Features:

- Basic regular Rockwell type tester offering accuracy, reliability and durability at an extremely affordable price
- Rugged construction, will stand up to the harshest environments
- Direct analogue reading of HRC, B, A, F
- Accuracy conforms to EN-ISO 6508 and ASTM E-18
- Mechanical test cycle without the need of electricity
- Easy load force selection by robust dial knob
- Oil brake with variable damping by adjustable knob
- Large capacity to accommodate large test specimen



Part No. CV-600A

Sale \$3,525.⁴⁸

List Price \$3,917.20

CV Instruments Rockwell Type Hardness Tester

Features:

- Digital LCD reading of 15 regular Rockwell scales!
- Conversion to all other hardness scales such as Vickers and Brinell
- Menu operated LCD screen with many functions such as GO/NO GO judgement, Conversions, Load cycle indication, Date, Time
- Integrated printer for test result and statistics
- RS-232 data output to Microsoft Hyperterminal, 'Win Wedge' etc.
- Accuracy, reliability and durability at extremely affordable price
- Rugged construction, will stand up to the harshest environments
- Accuracy conforms to EN-ISO 6508 and ASTM E-18
- Easy load force selection by robust dial knob
- Large working space accomodates also larger specimen
- Electronic software calibration mode



Part No. CV-600D

Sale \$12,903.⁹⁹

List Price \$14,337.77

Sylvac Gap Taper Gauge

Features:

- Patented Design: Innovative technology for gap width measurement
- Wireless Digital Connectivity: Integrated Bluetooth® for seamless data export
- Quick Measurements: One-push operation for repetitive tasks such as turbine blading and rotor alignment
- Durable & Reliable: IP67-rated for protection against water, coolants, and lubricants
- Exceptional Precision: Ensures accurate results for radial and axial gap alignment

NEW!



Part No.	Measurement Capacity	Resolution	List Price	Sale Price
918.0005	0.02-0.2"/0.5-5.5mm	0.0005"/0.01mm	\$3,149.95	\$ 2,992.45
918.0012	0.02-0.7"/0.5-17.5mm	0.0005"/0.01mm	\$2,858.87	\$2,715.92
918.0025	0.5-1.1"/12.5-28.5mm	0.0005"/0.01mm	\$2,912.63	\$2,767.00

Sylvac S_Dial Mini Bluetooth Indicators

Features:

- Compact, small diameter (Ø45 mm)
- Water and coolant resistant, protection rating IP54 or IP67 according to IEC 60529 (depends on model)
- Data output RS 232 combined with external power supply and Bluetooth® (depends on model)
- Interchangeable contact point M2.5
- Clamping stem Ø 8-h6 of hardened and ground stainless steel
- Min/max/delta display
- Multiplication factor
- Automatic power shut down



Part No.	Descriptions	Range	Resolution	List Price	Sale Price
805.6121.10	With lifting cap	0.49"/12.5mm	0.0005"/0.01mm	\$677.45	\$643.58
805.6125.10	With rubber protection boots	0.49"/12.5mm	0.0005"/0.001mm	\$710.08	\$674.58
805.6521.10	With lifting cap	0.49"/12.5mm	0.0005"/0.01mm	\$914.02	\$868.32
805.6525.10	With rubber protection boots	0.49"/12.5mm	0.0005"/0.001mm	\$952.96	\$905.31

25.2

Sylvac

ECLIPSE
TOOLS NORTH AMERICA INC

Sylvac Hi_Cal V2 Digital Height Gauges

For your finer, more delicate parts.



**3 YEAR
WARRANTY**



830.0156



830.0306



830.0456

Features:

- **Bluetooth for quick, easy recorded measurements**
- Extra low measuring force, from 0.2N
- Measure internal and external diameters, centerlines, heights, widths, depths and MIN/MAX/TIR capability
- Excellent repeatability thanks to the motorized carriage
- High reliability
- Bluetooth, USB and RS232 data outputs
- Battery life: 40 hours rechargeable during operation
- Touch sensitive probe speed for easy operation
- Base with small footprint
- Includes: protective cover, charging set, ruby ball probe Ø3mm, setting gauge and calibration certificate

Full Probe Set



930.2150

Basic Probe Set



930.2151

Part No.	Range	Accuracy	List Price	Sale Price
830.0156	6"/150mm	0.00013"/0.0034mm	\$6,618.78	\$6,287.84
830.0306	12"/300mm	0.00016"/0.0042mm	\$7,008.12	\$6,657.71
830.0456	17.5"/450mm	0.00020"/0.005mm	\$8,176.14	\$7,767.33
Accessories				
930.2150	Full Probe Set		\$1,779.39	\$1,690.42
930.2151	Basic Probe Set		\$1,187.79	\$1,128.40

Sylvac SCAN S65/S65T

High-performance machine for dynamic measurement of cylindrical parts up to Ø65mm

25.2



- Features:**
- Motorized tailstock: essential for full automation integration
 - Adjustable clamping force: adaptable to any type of part
 - LED-illuminated interior: for improved setup visibility
 - 8" touchscreen interface: simple, fast, and user-friendly operation
 - Quick-release tooling (ISO): for rapid part changeovers

Exclusive helix tilting system



Part No.	Diameter	Length	
902.4260 - SCAN S65	2.6"/65mm	13.8"/350mm	Call for pricing!
902.4265 - SCAN S65T	2.6"/65mm	13.8"/350mm	Call for pricing!

The BEST Solution for Measuring Shafts and Turned Parts!

Instant results with one click of a button and no operator influence!

Increase productivity while reducing scrap and inspection cycle times by a factor of 10 with the SCAN family line-up.



Prices & Specifications are subject to change without notice.

Sylvac Swiss Digital Calipers

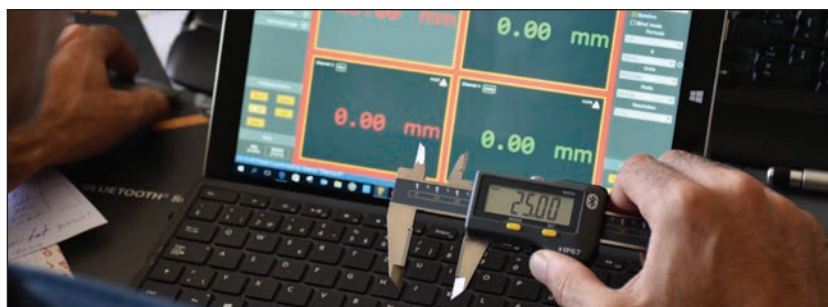
3 styles to suit your needs.



810.1506.10



810.1702.10



Features:

- IP67 protected against fluid and dust
- Available with Bluetooth, proximity cable or no SPC output
- Heavy duty frame
- Extra large display
- Available with ISO Cert
- 12"/300mm is supplied without depth rod

3 YEAR WARRANTY

sylvac

SWISS PRECISION



Calibration certificates available for all sizes.

Part No.	Range	Accuracy	Resolution	List Price	Sale Price
Bluetooth Communication					
810.1506.10	6"/150mm	0.0008"/20µm	0.0005"/0.01mm	\$483.52	\$459.34
810.1526.10	8"/200mm	0.0012"/30µm	0.0005"/0.01mm	\$727.56	\$691.18
810.1536.10	12"/300mm	0.0012"/30µm	0.0005"/0.01mm	\$899.43	\$854.46
Proximity Cable Communication					
810.1702.10	6"/150mm	0.0008"/20µm	0.0005"/0.01mm	\$311.64	\$296.06
810.1722.10	8"/200mm	0.0012"/30µm	0.0005"/0.01mm	\$514.45	\$488.73
810.1732.10	12"/300mm	0.0012"/30µm	0.0005"/0.01mm	\$657.68	\$624.80
Without Data Output					
810.1502.10	6"/150mm	0.0008"/20µm	0.0005"/0.01mm	\$257.80	\$244.91
810.1522.10	8"/200mm	0.0012"/30µm	0.0005"/0.01mm	\$413.62	\$392.94
810.1532.10	12"/300mm	0.0012"/30µm	0.0005"/0.01mm	\$562.57	\$534.44
Connectivity Cables/Accessories					
981.7132	Sylcom Basic Data Processing Software			\$1,303.68	\$1,238.50
926.6721.10	Proximity cable with USB Connection			\$244.90	\$232.66
926.6723	Proximity cable with Serial Connection			\$256.27	\$243.46
981.7100	USB Bluetooth Receiver			\$164.99	\$156.74

Sylvac Ultralight IV Digital Calipers

The Sylvac Ultralight IV, new design, new features, built-in Bluetooth transmitter.



- Features:**
- IP67 protected against fluid and dust
 - Built-in Bluetooth
 - Reinforced frame
 - XXL display with 0.79"/20mm high digits
 - Lengthened jaws 7.9"/200mm
 - Includes upper ID measuring pins (5mm dia.)
 - Moveable left jaw
 - Stainless steel titanium coated jaws
 - Hold feature
 - Preset function
 - Min/Max functions
 - Tolerance mode
 - Internal and external measurement indicator



Alternative jaws available, contact the Eclipse Sales Team for more information 1-800-260-2124

Specifications	811.1404.10	811.1406.10	811.1410.10	811.1415.10	811.1420.10	811.1425.10
Measuring Range	0-15"/0-400mm	0-24"/0-600mm	0-40"/0-1000mm	0-60"/0-1500mm	0-80"/0-2000mm	0-100"/0-2500mm
Maximum Error	0.0012"/30µm	0.0016"/40µm	0.002"/50µm	0.0035"/90µm	0.0048"/120µm	0.0078"/200µm
Repeatability	0.0008" /20µm				0.0012"/30µm	
Measuring Force	5 - 10 N					
Connection	Bluetooth Smart/Proxi. - RS-232 or - USB					
Protection Rating	IP67 (Electronic Module)					
Preset Max.	±399.9995 IN / ±9999.99 mm					
Weight	3.3 lbs/1.5 kg	3.5 lbs/1.6 kg	4.1 lbs/1.9 kg	5 lbs/2.3 kg	5.7 lbs/2.6 kg	6.3 lbs/2.9 kg

Part No.	Range	List Price	Sale Price
811.1404.10	0 - 16"/0 - 400mm	\$2,759.02	\$2,621.07
811.1406.10	0 - 24"/0 - 600mm	\$3,083.27	\$2,929.11
811.1410.10	0 - 40"/0 - 1000mm	\$3,685.95	\$3,501.65
811.1415.10	0 - 60"/0 - 1500mm	\$5,279.72	\$5,015.73
811.1420.10	0 - 80"/0 - 2000mm - special order	\$7,232.11	\$6,870.50
811.1425.10	0 - 100"/0 - 2500mm - special order	\$9,151.28	\$8,693.72
Connectivity Cables/Accessory			
981.7132	Sylcom Basic Data Processing Software	\$1,303.68	\$1,238.50
926.6721.10	Proximity USB Cable	\$244.90	\$232.66
926.6723	Proximity Serial Cable	\$256.27	\$243.46
981.7100	USB Bluetooth Receiver	\$164.99	\$156.74

Prices & Specifications are subject to change without notice.

Sylvac S_Cal EVO Long Jaw Calipers

Features:

- Extended reach
- Seamless data acquisition
- Built to last
- Enhanced efficiency
- Jaw length: 100mm

NEW!


Part No.	Range	Resolution	List Price	Sale Price
810.1546.10	12"/300mm	0.0004"/0.01mm	\$1,291.28	\$1,226.72
810.1556.10	12"/300mm	0.0004"/0.01mm	\$1,400.13	\$1,330.12
810.1558.10	20"/500mm	0.0004"/0.01mm	\$1,687.73	\$1,603.34

Sylvac S_Cal EVO μ m Caliper

Features:

- New extra-large micron display
- Carbide jaws
- New extra-large display
- Programmable button according to needs (depending on model)
- Water protected for heavy-duty work with coolants and lubricants, protection rating IP67 according to IEC 60529
- Automatic wake-up by moving the electronic on his frame (Absolute System SIS)
- Sleeping mode after 20 min. of no use. (Absolute System SIS)
- Maximum speed of displacement: 2.5 m/sec
- Mechanical frame in stainless steel



Part No.	Range	Resolution	Description	List Price	Sale Price
810.9506.10	0-6"/0-150mm	0.00005"/0.001mm	With flat depth rod	\$719.55	\$683.57
810.9516.10	0-6"/0-150mm	0.00005"/0.001mm	With round depth rod	\$719.55	\$683.57

Sylvac Digital Indicators

Features:

- IP54 protected against fluid and dust
- Repeatability: 2µm
- Output: Proximity/Power - USB/RS232/digimatic/Wireless
- Menus customizable with free software
- Wide range of functions (MIN/MAX/DELTA, TOL, Factor, Preset, Auto Off, etc)
- Bezel rotates 270°
- Large display with LED tolerance indicators
- Includes lug back








Part No.	Range	Accuracy	Resolution	List Price	Sale Price
805.5201.10	0 - 0.500"/12.5mm	0.0004"/0.01mm	0.0005"/0.01mm	\$782.56	\$743.43
805.5301.10	0 - 0.500"/12.5mm	0.00012"/0.003mm	0.00005"/0.001mm	\$977.35	\$928.48
805.5401.10	0 - 1"/25mm	0.0004"/0.01mm	0.0005"/0.01mm	\$938.39	\$891.47
805.5501.10	0 - 1"/25mm	0.00016"/0.004mm	0.00005"/0.001mm	\$1,133.17	\$1,076.51
805.5621.10	0 - 2"/50mm	0.00019"/0.005mm	0.00005"/0.001mm	\$1,559.39	\$1,481.42
805.5641.10	0 - 4"/100mm	0.0008"/0.02mm	0.0005"/0.01mm	\$2,142.59	\$2,035.46
805.5661.10	0 - 4"/100mm	0.0002"/0.006mm	0.00005"/0.001mm	\$2,330.50	\$2,213.98
805.5671.10	0 - 6"/150mm	0.0008"/0.02mm	0.0005"/0.01mm	\$2,796.83	\$2,656.99
805.5681.10	0 - 6"/150mm	0.0004"/0.01mm	0.00005"/0.001mm	\$3,119.94	\$2,963.94
Bluetooth					
805.6301.10	0 - 0.500"/12.5mm	0.00012"/0.003mm	0.00005"/0.001mm	\$1,134.31	\$1,077.59
805.6501.10	0 - 1"/25mm	0.00016"/0.004mm	0.00005"/0.001mm	\$1,348.57	\$1,281.14
Accessories					
981.7132	Sylcom Basic Data Processing Software			\$1,303.68	\$1,238.50
981.7100	USB Bluetooth Receiver			\$164.99	\$156.74

Sylvac Digital Test Indicators

Features:

- Bluetooth connectivity to your phone or tablet
- IP65 protected against fluid and dust
- 4 measuring modes: Min, Max, TIR and Direct
- 4 measuring resolutions - 0.00005"/0.001mm or 0.0005"/0.01mm
- 1-1/2" diameter dial face rotates a full 360°
- Analog scale for reversal point indication
- Meets or exceeds DIN/ISO Standards
(Maximum error on 0.00005" scale at full range: 0.0004")








Part No.	Range	Contact Point Length	List Price	Sale Price
805.4321.10	0.030"/0.80mm	1/2"	\$933.63	\$886.95
805.4322.10	0.080"/2.0mm	1-7/16"	\$1,064.88	\$1,011.64
805.4323.10	0.030"/0.80mm	1/2"	\$1,223.45	\$1,162.28
	0.080"/2.0mm	1-7/16"		
Accessories				
981.7132	Sylcom Basic Data Processing Software		\$1,303.68	\$1,238.50
981.7100	USB BT Receiver		\$164.99	\$156.74

Bowers **BLUETOOTH**

XTH3 Bluetooth Holematic Pistol Grips



Features:

- Coolant proof, dust proof - IP67
- Resolution: 0.00005"/0.001mm
- Bluetooth connectivity to your phone or tablet
- Self centering 3 point heads above 0.250"
- Tungsten carbide measuring faces on all 3-point heads from 0.5"/12.5mm and up
- Sizes over 0.500"/12.5mm feature blind bore capability
- Includes UKAS certificates for all pistol grip, heads and rings

Pistol grip design significantly decreases measuring time



Part No.	Range	Includes	List Price	Sale Price
Pistol Grip Individual Sets				
XTH1i-BT	0.080"-0.100"/2-2.5mm	1 head, 1 handle, 1 ring	\$3,444.74	\$3,100.27
XTH2i-BT	0.100"-0.120"/2.5-3mm	1 head, 1 handle, 1 ring	\$3,444.74	\$3,100.27
XTH3i-BT	0.120"-0.160"/3-4mm	1 head, 1 handle, 1 ring	\$3,386.39	\$3,047.75
XTH4i-BT	0.160"-0.200"/4-5mm	1 head, 1 handle, 1 ring	\$3,386.39	\$3,047.75
XTH5i-BT	0.200"-0.250"/5-6mm	1 head, 1 handle, 1 ring	\$3,409.73	\$3,068.76
XTH6i-BT	0.250"-0.313"/6-8mm	1 head, 1 handle, 1 ring	\$2,450.68	\$2,205.61
XTH8i-BT	0.313"-0.375"/8-10mm	1 head, 1 handle, 1 ring	\$2,368.99	\$2,132.09
XTH10i-BT	0.375"-0.500"/10-12.5mm	1 head, 1 handle, 1 ring	\$2,509.03	\$2,258.13
XTH12i-BT	0.500"-0.625"/12.5-16mm	1 head, 1 handle, 1 ring	\$2,567.38	\$2,310.64
XTH16i-BT	0.625"-0.750"/16-20mm	1 head, 1 handle, 1 ring	\$2,684.08	\$2,415.67
XTH20i-BT	0.750" - 1"/20 - 25mm	1 head, 1 handle, 1 ring	\$2,883.53	\$2,595.18
XTH25i-BT	1" - 1.375"/25 - 35mm	1 head, 1 handle, 1 ring	\$3,116.92	\$2,805.23
XTH35i-BT	1.375" - 2"/35 - 50mm	1 head, 1 handle, 1 ring	\$3,304.70	\$2,974.23
XTH50i-BT	2"-2.625"/50-65mm	1 head, 1 handle, 1 ring	\$3,268.63	\$2,941.77
XTH65i-BT	2.625"-3.125"/65-80mm	1 head, 1 handle, 1 ring	\$3,268.63	\$2,941.77
XTH80i-BT	3.125"-4"/80-100mm	1 head, 1 handle, 1 ring	\$3,503.09	\$3,152.78
XTH100i-BT	4"-5"/100-125mm	1 head, 1 handle, 1 ring	\$3,619.79	\$3,257.81
XTH125i-BT	5"-6"/125-150mm	1 head, 1 handle, 1 ring	\$3,854.25	\$3,468.83
XTH150i-BT	6"-7"/150-175mm	1 head, 1 handle, 1 ring	\$4,087.65	\$3,678.89
XTH175i-BT	7"-8"/175-200mm	1 head, 1 handle, 1 ring	\$4,240.42	\$3,816.38
XTH200i-BT	8"-9"/200-225mm	1 head, 1 handle, 1 ring	\$5,585.64	\$5,027.08
XTH225i-BT	9"-10"/225-250mm	1 head, 1 handle, 1 ring	\$6,111.84	\$5,500.66
XTH250i-BT	10"-11"/250-275mm	1 head, 1 handle, 1 ring	\$6,311.29	\$5,680.16
XTH275i-BT	11"-12"/275-300mm	1 head, 1 handle, 1 ring	\$7,011.49	\$6,310.34
Pistol Grip Complete Sets				
SXTH1i-BT	0.080" - 0.250"/2 - 6mm (2 pt.)	5 heads, 1 handle, 3 rings	\$7,655.45	\$6,889.91
SXTH3i-BT	0.250" - 0.375"/6 - 10mm	2 heads, 1 handle, 1 ring	\$2,918.54	\$2,626.69
SXTH4i-BT	0.375" - 0.750"/10 - 20mm	3 heads, 1 handle, 2 rings	\$3,444.74	\$3,100.27
SXTH5i-BT	0.750" - 2"/20 - 50mm	3 heads, 1 handle, 2 rings	\$4,438.81	\$3,994.93
SXTH6i-BT	2" - 4"/50 - 100mm	3 heads, 1 handle, 2 rings	\$4,965.01	\$4,468.51
SXTH7i-BT	4" - 6"/100 - 150mm	2 heads, 1 handle, 1 ring	\$4,438.81	\$3,994.93
SXTH8i-BT	6" - 8"/150 - 200mm	2 heads, 1 handle, 1 ring	\$5,959.08	\$5,363.17
SXTH9i-BT	4" - 8"/100 - 200mm	4 heads, 1 handle, 2 rings	\$9,526.88	\$8,574.19
SXTH11i-BT	0.750" - 4"/20 - 100mm	6 heads, 1 handle, 4 rings	\$7,421.00	\$6,678.90
SXTH10i-BT	0.250" - 0.750"/6 - 20mm	5 heads, 1 handle, 3 rings	\$4,087.65	\$3,678.89
Connectivity Cables/Accessory				
926.6721.10	Proximity cable with USB connection		\$244.90	\$232.66
926.6723	Proximity cable with serial connection		\$256.27	\$243.46
981.7100	USB bluetooth receiver		\$164.99	\$156.74

Bore Gauging Systems

XTD3 Bluetooth Electronic Holemikes



Measure cylinder bores, high accuracy bearings, grooves, threads, and much more!

Special application heads available and operate with either style handle

Contact the Eclipse Sales Team for more information! 1-800-260-2124

Part No.	Range	Includes	List Price	Sale Price
Holemike Individual Sets (Traditional style)				
2-Point Heads				
XTD1i-BT	0.080" - 0.100"/2 - 2.5mm	1 head, 1 handle, 1 ring	\$2,976.89	\$2,679.20
XTD2i-BT	0.100" - 0.120"/2.5 - 3mm	1 head, 1 handle, 1 ring	\$2,976.89	\$2,679.20
XTD3i-BT	0.120" - 0.160"/3 - 4mm	1 head, 1 handle, 1 ring	\$2,975.82	\$2,678.24
XTD4i-BT	0.160" - 0.200"/4 - 5mm	1 head, 1 handle, 1 ring	\$2,975.82	\$2,678.24
XTD5i-BT	0.200" - 0.250"/5 - 6mm	1 head, 1 handle, 1 ring	\$2,975.82	\$2,678.24
3-Point Heads				
XTD6i-BT	0.250" - 0.312"/6 - 8mm	1 head, 1 handle, 1 ring	\$2,099.52	\$1,889.57
XTD8i-BT	0.312" - 0.375"/8 - 10mm	1 head, 1 handle, 1 ring	\$2,099.52	\$1,889.57
XTD10i-BT	0.375" - 0.500"/10 - 12.5mm	1 head, 1 handle, 1 ring	\$2,099.52	\$1,889.57
XTD12i-BT	0.500" - 0.625"/12.5 - 16mm	1 head, 1 handle, 1 ring	\$2,157.87	\$1,942.08
XTD16i-BT	0.625" - 0.750"/16 - 20mm	1 head, 1 handle, 1 ring	\$2,157.87	\$1,942.08
XTD20i-BT	0.750" - 1"/20 - 25mm	1 head, 1 handle, 1 ring	\$2,567.38	\$2,310.64
XTD25i-BT	1" - 1.375"/25 - 35mm	1 head, 1 handle, 1 ring	\$2,918.54	\$2,626.69
XTD35i-BT	1.375" - 2"/35 - 50mm	1 head, 1 handle, 1 ring	\$3,035.23	\$2,731.71
XTD50i-BT	2" - 2.625"/50 - 65mm	1 head, 1 handle, 1 ring	\$3,328.04	\$2,995.24
XTD65i-BT	2.625" - 3.250"/65 - 80mm	1 head, 1 handle, 1 ring	\$3,328.04	\$2,995.24
XTD80i-BT	3.250" - 4"/80 - 100mm	1 head, 1 handle, 1 ring	\$3,503.09	\$3,152.78
XTD100i-BT	4" - 5"/100 - 125mm	1 head, 1 handle, 1 ring	\$3,678.14	\$3,310.33
XTD125i-BT	5" - 6"/125 - 150mm	1 head, 1 handle, 1 ring	\$3,795.90	\$3,416.31
XTD150i-BT	6" - 7"/150 - 175mm	1 head, 1 handle, 1 ring	\$4,146.00	\$3,731.40
XTD175i-BT	7" - 8"/175 - 200mm	1 head, 1 handle, 1 ring	\$4,380.46	\$3,942.41
XTD200i-BT	8" - 9"/200 - 225mm	1 head, 1 handle, 1 ring	\$5,316.17	\$4,784.55
XTD225i-BT	9" - 10"/225 - 250mm	1 head, 1 handle, 1 ring	\$5,842.38	\$5,258.14
XTD250i-BT	10" - 11"/250 - 275mm	1 head, 1 handle, 1 ring	\$6,017.42	\$5,415.68
XTD275i-BT	11" - 12"/275 - 300mm	1 head, 1 handle, 1 ring	\$6,543.63	\$5,889.27
Holemike Complete Sets (Traditional style)				
SKTD1i-BT	0.080" - 0.250"/2 - 6mm (2 pt.)	5 heads, 1 handle, 3 rings	\$7,011.49	\$6,310.34
SXTD3i-BT	0.250" - 0.375"/6 - 10mm	2 heads, 1 handle, 1 ring	\$2,800.78	\$2,520.70
SXTD4i-BT	0.375" - 0.750"/10 - 20mm	3 heads, 1 handle, 2 rings	\$3,386.39	\$3,047.75
SXTD5i-BT	0.750" - 2"/20 - 50mm	3 heads, 1 handle, 2 rings	\$4,672.20	\$4,204.98
SXTD6i-BT	2" - 4"/50 - 100mm	3 heads, 1 handle, 2 rings	\$5,140.06	\$4,626.05
SXTD7i-BT	4" - 6"/100 - 150mm	2 heads, 1 handle, 1 ring	\$4,322.11	\$3,889.90
SXTD8i-BT	6" - 8"/150 - 200mm	2 heads, 1 handle, 1 ring	\$5,784.03	\$5,205.63
SXTD9i-BT	4" - 8"/100 - 200mm	4 heads, 1 handle, 2 rings	\$9,234.07	\$8,310.66
Connectivity Cables/Accessory				
926.6721.10	Proximity cable with USB connection		\$244.90	\$232.66
926.6723	Proximity cable with serial connection		\$256.27	\$243.46

Prices & Specifications are subject to change without notice.

XTA Analogue Bore Gauges

Features:

- 2-6mm 2 point / 6-300mm 3 point measurement
- Graduation 2-6mm: 0.001mm, 6-300mm: 0.005mm
- Ratchet stop to ensure consistent measurement
- More compact mechanical controller
- Lighter and ergonomically designed
- Improved functionality



Part No.	Range	List Price	Sale Price
Individual Instruments supplied with setting ring and UKAS			
XTA20i	0.750"-1"/20-25mm	\$684.28	\$615.85
XTA25i	1"-1.375"/25-35mm	\$977.09	\$879.38
XTA35i	1.375"-2"/35-50mm	\$994.06	\$894.65
XTA50i	2"-2.625"/50-65mm	\$1,193.51	\$1,074.16
XTA65i	2.625"-3.125"/65-80mm	\$1,193.51	\$1,074.16
XTA80i	3.125"-4"/80-100mm	\$1,514.97	\$1,363.47
XTA100i	4"-5"/100-125mm	\$1,514.97	\$1,363.47
XTA125i	5"-6"/125-150mm	\$1,748.36	\$1,573.52
XTA150i	6"-7"/150-175mm	\$2,251.23	\$2,026.11
XTA175i	7"-8"/175-200mm	\$2,567.38	\$2,310.64
XTA200i	8"-9"/200-225mm	\$3,450.05	\$3,105.05
XTA225i	9"-10"/225-250mm	\$3,596.45	\$3,236.81
XTA250i	10"-11"/250-275mm	\$3,912.60	\$3,521.34
XTA275i	11"-12"/275-300mm	\$4,087.65	\$3,678.89
Standard Sets supplied with individual instrument, setting rings and UKAS			
SXA5i	0.750"-2"/20-50mm	\$2,614.06	\$2,352.65
SXA6i	2"-4"/50-100mm	\$3,503.09	\$3,152.78
SXA7i	4"-6"/100-150mm	\$2,649.07	\$2,384.16
SXA8i	6"-8"/150-200mm	\$3,772.56	\$3,395.30

Bowers XT Holematic Groove Sets

General sizes available.



Features:

- Coolant proof, dust proof - IP67
- Pistol grip handle for FAST measurements
- Resolution: 0.00005"/.001mm, direct in/mm conversion
- Error free bluetooth data transfer
- Includes depth stops and UKAS certified setting rings
- Special sizes, profiles and depth extensions available to measure any bore feature



Part No.	Sizes Included	Anvil Step Height	Anvil Contact Width	List Price	Sale Price
SP-SXTH10i-BT-GRO	1/4" - 5/16"	0.049"	0.059"	\$7,454.46	\$6,709.02
	5/16" - 3/8"	0.049"	0.059"		
	3/8" - 1/2"	0.059"	0.059"		
	1/2" - 5/8"	0.079"	0.059"		
	5/8" - 3/4"	0.098"	0.059"		
SP-SXTH5i-BT-GRO	3/4" - 1"	0.108"	0.079"	\$6,018.45	\$5,416.61
	1" - 1-3/8"	0.217"	0.079"		
	1-3/8" - 2"	0.157"	0.079"		
SP-SXTH6i-BT-GRO	2" - 2-5/8"	0.315"	0.118"	\$7,119.76	\$6,407.78
	2-5/8" - 3-1/4"	0.315"	0.118"		
	3-1/4" - 4"	0.413"	0.118"		

Bowers MicroGauge

Pocket sized 2-point bore gauging system

25.2



Features:

- System range : 0.040" - 0.250"/1 - 6mm
- Switchable resolution 0.0005", 0.00005"/0.01, 0.001, 0.0005mm
- Repeatability : 0.00005"/0.001mm
- Sets include setting rings with UKAS certificates
- Depth stops available, call our sales team 1-800-260-2124



Part No.	Description	List Price	Sale Price
SMG010M	0.037"-0.096"/0.95-2.45mm	\$5,281.16	\$4,753.04
SMG011M	0.060"-0.167"/1.5-4.25mm	\$4,971.38	\$4,474.24
SMG012M	0.089"-0.250"/2.25-6.35mm	\$5,246.15	\$4,721.54
Connectivity Cables			
926.6721.10	Proximity cable with USB connection	\$244.90	\$232.66
926.6723	Proximity cable with serial connection	\$256.27	\$243.46

Bowers DigiMic

Features:

- Bluetooth IOT ready
- Compatible with Sylcom software and free mobile app
- IP67 protection rating
- Resolution 0.001mm (0.000039")
- Large LCD display
- mm / inch conversion
- Solid Carbide contact faces
- Rotary Encoder & Spindle
- Spindle Ø 6.5 mm (0.26")
- CR2032 lithium battery
- UKAS to BS 870 certification
- Exceeds DIN863/1 & ISO3611



Part No.	Range	Accuracy	List Price	Sale Price
DM025	0 - 1" /0-25mm	0.00008"/0.002mm	\$1,224.04	\$1,101.64
DM050	1" - 2" /25-50mm	0.00008"/0.002mm	\$1,339.77	\$1,205.79
DM075	2" - 3" /50-75mm	0.00012"/0.003mm	\$1,346.15	\$1,211.54
DM100	3" - 4" /75-100mm	0.00012"/0.003mm	\$1,360.00	\$1,224.00

Prices & Specifications are subject to change without notice.

Bowers

ECLIPSE
TOOLS NORTH AMERICA INC

Trimos V Series Digital Height Gauges

The Trimos V series vertical measuring instruments have been developed for the most difficult shop floor environments. Manufactured in Switzerland, they guarantee precise and repeatable measurements with superior ease of use.

Features:

- Electronically adjustable measuring force 0.75/1.5 (N)
- Lithium-ion rechargeable batteries last up to 40 hours
- Bluetooth transmitter available

All models include:

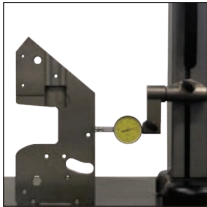
- Charging unit
- Measuring probe with ruby ball Ø4mm
- Probe holder elbow Ø 8mm
- Setting gauge
- User's manual and calibration certificate



Measures ID/OD, centerlines, heights, widths, depths, min/max/delta, slots, grooves and more!

V-Series Electronic Height Gauges Comparison Chart

	V5	V4	V3/V2
Accuracy			
1.2 + L(mm)/1000 µm			
2 + L(mm)/400 µm			
2.5 + L(mm)/300 µm	✓		
4.5 - 6 µm		✓	
7 - 8 µm			✓
Range			
400/700mm	✓	✓	✓
1100mm	✓		
Smart Reverse for Ø	✓	✓	✓
Air Cushion	✓	✓	
Wireless Option		✓	
Manual/Motorized	✓		
Manual ONLY		✓	✓
Fine Adjustment			
Color Display			
2D Measuring			



Part No.	Range	List Price	Sale Price
V2			
V2-400	16"/407mm	\$5,940.00	\$5,643.00
V2-700	28"/711mm	\$7,038.04	\$6,686.14
V3			
V3-400	16"/407mm	\$6,585.89	\$6,256.60
V3-700	28"/711mm	\$7,298.56	\$6,933.63
V4			
V4-400	16"/407mm	\$8,155.61	\$7,747.83
V4-700	28"/711mm	\$9,401.05	\$8,931.00
V5			
V5-400	16"/407mm	\$9,401.05	\$8,931.00
V5-700	28"/711mm		Call for pricing
V5-1100	43.7"/110mm		Call for pricing
Probe Sets			
TA-SE-105	4mm Probe Set, 21 piece	\$2,960.19	\$2,812.18
TA-SE-106	8mm Probe Set, 16 piece	\$2,206.21	\$2,095.90
TA-SE-107	8mm Basic Probe Set, 7 piece	\$854.26	\$811.55
Accessories			
TA-IH-127	12"/300mm Holder - for 8mm probes	\$1,697.23	\$1,612.37
TA-EL-022	Bluetooth transmitter (Not available for V3 models)	\$1,007.73	\$957.34
981.7161.10	Vmux software - for connecting multiple units to one PC	\$635.13	\$603.37

Trimos Height Gauge V1 & V1+

Tough gauge for the modern workshop!



Features:

- Robust and Easily Portable
- Clear, Simple User Interface
- Counterweight for Operational Comfort
- Quick and Smooth Carriage movement
- Designed and manufactured in Switzerland
- Bidirectional Measurement Capability (V1+)
- Measuring Force Management (V1+)



Part No.	Range	Resolution	List Price	<i>Sale Price</i>
V1				
V1-300	12"/306mm	0.0005"/0.01mm	\$4,134.70	\$3,927.97
V1+				
V1+-300	12"/306mm	0.00005"/0.001mm	\$5,798.39	\$5,508.47

Trimos Height Gauge V4+

The new standard in height gauge performance

Features:

- Offers robust mechanical stability; supports long and heavy probes with exceptional repeatability
- Ease of use for both simple and complex tasks
- Real time display of measurement progress and results
- Smart touch navigation
- Integrated 2-coordinate measurement
- Comprehensive data connectivity
- 2D angles & PCD



Part No.	Range	Resolution	List Price	<i>Sale Price</i>
V4+				
V4+-400	16"/407mm	0.00005"/0.001mm	\$11,301.50	\$10,736.43

Trimos A3 Portable Measuring Arm 70"/1800mm

Extremely easy and accurate 3D measurement

Features:

- Measuring range 70"/1800mm
- Extremely easy to use
- Volumetric Accuracy: 0.0007"/0.018mm
- Point Repeatability: 0.0003"/0.008mm
- Electromagnetic brake locking system
- Portability extreme
- No special arrangements required
- Fixed or interchangeable probe
- Integrated Bluetooth System
- USB connectivity
- Buttons mounted on the probe for an improved measuring sensitivity

****Other options and sizes available***



Part No. A3-1800-W



25.2

Trimos

ECLIPSE
TOOLS NORTH AMERICA INC.

Sale \$49,995.00

****Price includes software, laptop, and training along with a 2-year warranty.***

Trimos HS3 Motorized Setting Bench

For the fast and precise setting and calibration of
variable-dimension measuring tools

Features:

- Motorized movement: quick positioning
- Instant start-up: operational in a few of seconds
- Communication via RS232 or Bluetooth: easy integration into your digital environment
- Rugged electronics: designed to last in industrial environments
- Cast iron base with the same thermal properties as steel: no temperature problems
- Calibration of internal and external instruments
- Works like a "virtual ring gauge": all diameters in one device
- In-house calibration capability: total on-site autonomy



NEW!

Part No. HS3-400

Sale \$26,725.00

Prices & Specifications are subject to change without notice.

Horizontal & Vertical Test Indicators**Features:**

- Super smooth jeweled movement
- Smooth bezel adjustment for easy zero setting
- Solid brass anti-magnetic housing
- 0.080" and 0.120" carbide ball contact points (0.040" steel ball)
- 0.060" range with auto reverse and rev. counter
- Easy to read tilted dial
- 5/32" pivotable stem



52-562-005-0



52-562-001-0



52-562-002-BD

Part No.	Graduation	Dial Size	Dial Reading	List Price	<i>Sale Price</i>
Horizontal					
52-562-001-0	0.0005"	1-1/2"	0 - 15 - 0	\$280.91	\$266.86
52-562-002-0	0.0005"	1"	0 - 15 - 0	\$247.96	\$235.56
Vertical					
52-562-005-0	0.0005"	1"	0 - 15 - 0	\$315.59	\$299.81

Vernier Inch Blade Micrometers

Use blade micrometers to measure the outside diameter of workpieces which have narrow grooves, "T" slots and other dimensions.



52-246-001-1

Features:

- Anvil & spindle hardened & precision ground with microlap finish on ends
- Non-rotating spindle
- Ratchet thimble
- Graduation: 0.0001"
- Blade thickness = 0.030"; blade width = 0.256"; blade penetration = 0.315"
- Sizes over 1" include a standard

Order No.	Range	Accuracy	List Price	<i>Sale Price</i>
52-246-001-1	0 - 1"	0.00016"	\$442.17	\$420.06
52-246-002-1	1" - 2"	0.00016"	\$482.05	\$457.95

36 Piece Economy Rectangular Gauge Block Set

Features:

- Standard industrial sizes ensure complete interchangeability with all accessories
- Blocks included in each set:
 - 9 Blocks .1001 thru .1009 step of .0001
 - 9 Blocks .101 thru .109 step of .001
 - 9 Blocks .110 thru .190 step of .01
 - 5 Blocks .100 thru .500 step of .1
 - 3 Blocks 1 , 2 , 4
 - 1 Block .050



Part No. 53-672-036-0

Sale \$681.³³

List Price \$717.19

8-1/2" Deluxe Dial Gauge Stand

Features:

- Quick positioning and adjustment
- Zero settings with knob for fine adjustment
- Fine adjustment of 5/32"
- Holds indicators with stems of 3/8" and 8mm
- Diameter of column is 1"
- Working surface of 3-1/2" x 3-1/2"



Part No. 52-580-015-0

Sale \$713.²⁸

List Price \$750.82

Granite Dial Gauge Stand

Features:

- Sturdy and compact with extreme stability
- 6" x6" x 2" granite base
- Positive lock screw
- Fine adjustment knob for zero setting
- Column height is 8"
- Accepts all lug-back indicators
- This stand is maintenance free
- Microscrew fingertip control
- Flatness: .00005"



Part No. 52-580-030-0

Sale \$230.⁶²

List Price \$242.76

Prices & Specifications are subject to change without notice.

Baty Velo FV

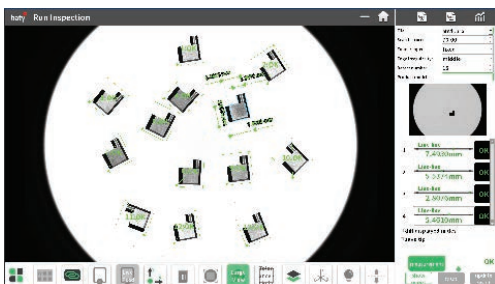
Entry Level, Fixed Stage Machine

Features:

- Measure up to 999 dimensions in 1 second
- Fully automatic inspection with CNC playback
- 100 x 80mm measuring range
- Motorized Auto-Focus with 75mm travel
- Programmable LED surface ring light
- Telecentric optics for high accuracy
- Automatic measurement, extract features from the scanned part
- Auto program from CAD, features, dimensions and tolerances
- Full reporting and SPC with immediate on screen PASS/FAIL classification
- Simple, easy to use software and user interface
- Character recognition - identify part numbers in a batch

baty **Velo**
FV

NEW!



Why Choose Velo?

- Lower Cost
- Faster ROI
- Greater Flexibility



**Call the Sales Team at Eclipse Tools NA Inc.
for more information! 1-800-260-2124**

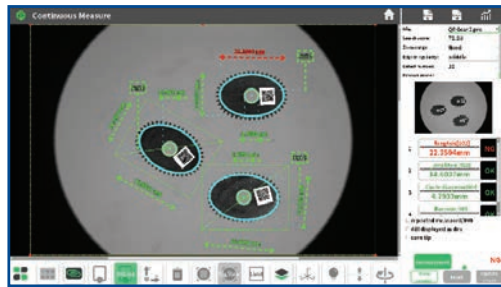
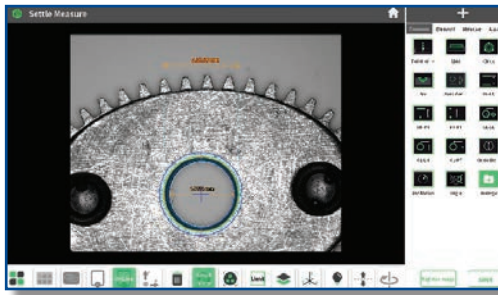
Baty Venture FV-1080D

Dual Field Fixed Stage

Features:

- Measure up to 999 dimensions in 1 second
- Fully automatic inspection with CNC playback
- 100 x 80mm measuring range
- Motorised Auto-Focus with 75mm travel
- Programmable LED lighting with motorised control
- Double telecentric optics for high accuracy
- Automatic measurement, extract features from the scanned part
- Auto program from CAD, features, dimensions and tolerances
- Full reporting and SPC with immediate on screen PASS/FAIL classification
- Simple, easy to use sw and user interface
- Character recognition - identify part numbers in a batch

baty **Venture**
FV



**Call the Sales Team at Eclipse Tools NA Inc.
for more information! 1-800-260-2124**

Baty Venture FH-1080

Horizontal Light Path Machine

The FH1080's fixed workstage platform allows parts to be placed for immediate measurement. Standard work holding accessories are available including the self centering vice the dual axis Vee block. These accessories locate into the stage platform via a central pivot location for ease of use.

The combination of surface lighting, auto-focus and rotary control allows surface features on different planes to be measured in a single shot.

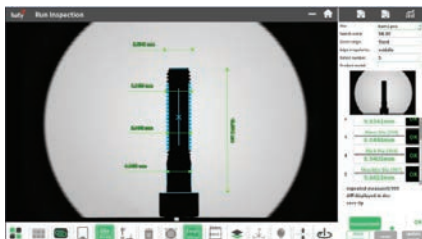
Features:

- Multi-faceted parts
- Chamfers and counter bore
- Milled features
- Fastener head details

baty **Venture**
FH



NEW!



*Call the Sales Team at Eclipse Tools NA Inc.
for more information! 1-800-260-2124*

Baty Venture 3030 XT Multi-Sensor Vision System



Features:

- 11.8"/300mm x 11.8"/300mm x 7.8"/200mm XYZ stage
- Teach and repeat programming with Fowler FUSION
- 6.5:1 zoom optics (with optional CNC control)
- High resolution 0.5µm scales for increased accuracy

Part No. VI-3030-Touch-XT

Baty Lever Type Dial Test Indicator Imperial

Features:

- High sensitivity, repeatability and accuracy
- Meet or exceed BS, DIN, Federal and other national standards
- Anti-magnetic
- Automatic reverse action stylus – hand always rotates clockwise
- Adjustable bezel for zeroing
- Rugged, satin chrome finished body
- Three dovetail mountings, top, back and front
- Fully jewelled and geared movement
- Precision ball bearing mounted, interchangeable carbide point swivels through 240°



Part No.	Range	Resolution	List Price	<i>Sale Price</i>
HL-5	0.03"	0.0005"	\$319.04	\$287.14
HL-6	0.03"	0.0005"	\$270.38	\$243.34
HL-7	0.02"	0.0005"	\$329.86	\$296.87
HL-8	0.008"	0.0001"	\$319.04	\$287.14
HL-9	0.008"	0.0001"	\$270.38	\$243.34



Revolutionary Manual CMM



Features

- Small footprint allowing measurements right next to your machine
- Intuitive software, allows quick and easy measurement
- Minimal setup
- Programmable magnetic soft buttons allow you to quickly change between software features without using a mouse
- Magnetic fixture templates allow you to quickly fix your part
- Volumetric accuracy of 0.0002"/0.005mm
- Uses a single USB cable to connect and requires no air



**Call the Sales Team at Eclipse Tools NA Inc.
for more information! 1-800-260-2124**

Prices & Specifications are subject to change without notice.

Bowers Digital Cylinder Bore Gauge

Features:

- Fast simple checking for bore size, ovality, taper, etc
- Tungsten carbide contact points
- Lightweight glass reinforced nylon gauge shroud for extra strength and protection
- Proximity RS232 output
- Inch / metric conversion
- Displays actual bore diameter or comparative results
- Range: 0.9-2.0"/22-50mm
- Measuring Depth: 6"/150mm

BLOWOUT!



Part No. CBGD020

Sale \$995.00

List Price \$2,665.00

****Limited quantities available
Call 1-800-260-2124 for more information!***

ECLIPSE
TOOLS NORTH AMERICA INC

50TH ANNIVERSARY 1974-2024
UNITED
TOOL SUPPLY LTD.

442 Millen Road Unit 9, Stoney Creek, ON L8E 6H2

☎ 1-800-260-2124

✉ sales@eclipse tools inc.com

🌐 <https://www.bowersgroup.co.uk/ca/>



Follow and Like Eclipse Tools NA

