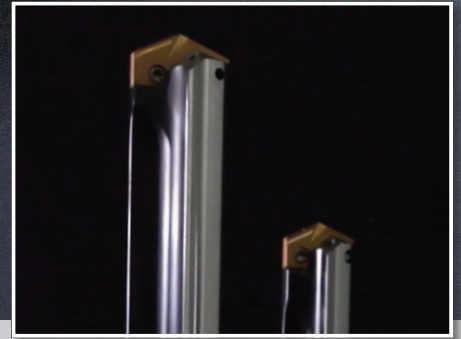


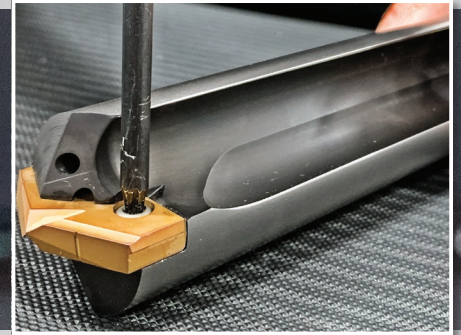
NEW

The **best** just got **better**.



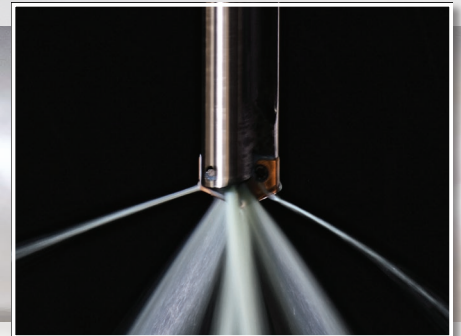
NEW HOLDER DESIGN

Optimized flute design for **increased** chip evacuation



NEW INSERT DESIGN

ISO specific geometries with a new point design
to **simplify** your insert choices



NEW COOLANT DESIGN

Proprietary coolant outlet configuration
provides **superior** performance even in
low-coolant applications



T-A Pro®

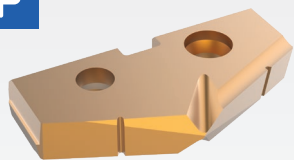


BUY 6 CARBIDE INSERTS
GET YOUR HOLDER
FREE*

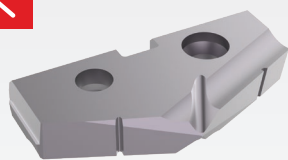
ends 12/30/2022

* Inserts must be P,K, or N geometry and the same series as the holder (7xD or less).

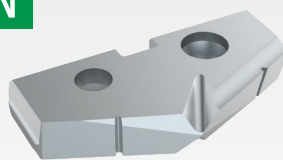
UNITED
TOOL SUPPLY LTD.

**T-A PRO®****| THE NEW HIGH-SPEED DRILLING SOLUTION****REDESIGNED INSERTS** Ø 0.437" - 1.882" (11.1mm - 47.8mm)**P****STEELS**

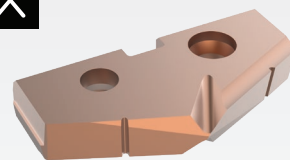
- Designed to provide increased penetration rates and tool life in steel applications
- Superior geometry and edge provides excellent chip control
- Allied's multi-layer AM300 coating increases heat resistance and improves tool life

K**CAST IRONS**

- Uniquely designed for cast/nodular iron applications
- Geometry developed for maximum tool life, reduced exit burr, and improved hole finish
- Allied's multi-layer TiAlN coating provides increased abrasion resistance and tool life

N**NON-FERROUS**

- Designed for application in aluminum, brass, and copper
- The geometry yields excellent chip control in these softer materials
- TiCN coating gives the versatility to run in a variety of materials while reducing buildup

X**HIGH-SPEED STEEL**

- Improved geometry for excellent chip control in all materials
- Long tool life and high-process security for the most challenging applications
- Allied's multi-layer AM200 coating combines excellent heat resistance and high lubricity for wide application use

REDESIGNED HOLDERS**NEW** flute design for increased chip evacuation**NEW** coolant configuration**NEW** inserts and point geometry**Lengths from 1xD to 15xD**

Stocked in 1xD, 3xD, 5xD, 7xD, 10xD, 12xD & 15xD



Note: For optimal performance, T-A Pro inserts should be used with T-A Pro holders.

UNITED
TOOL SUPPLY LTD.

9651 49 Ave, Edmonton, AB T6E 5Z5
(780)437-4220 | www.unitedtoolsupply.com



Contact us about a Guaranteed Test for a no-risk way to increase production and improve your process!

Contact your local Field Sales Engineer for details on our Guaranteed Tests.

MARK PEDERSON

780-267-3856
mpederson@alliedmachine.com

1.330.343.4283

120 Deeds Drive
Dover, OH 44622
United States
www.alliedmachine.com

Allied Machine offers expert engineering support. Whether you need a quote, a test, or an application solution, a highly skilled and trained engineer is standing by, ready to help.
ext: **7611** | email: appeng@alliedmachine.com



ALLIED MACHINE
& ENGINEERING

© 2022 Allied Machine and Engineering Corp. - All rights reserved.

All trademarks designated with the ® symbol are registered in the United States and other countries.